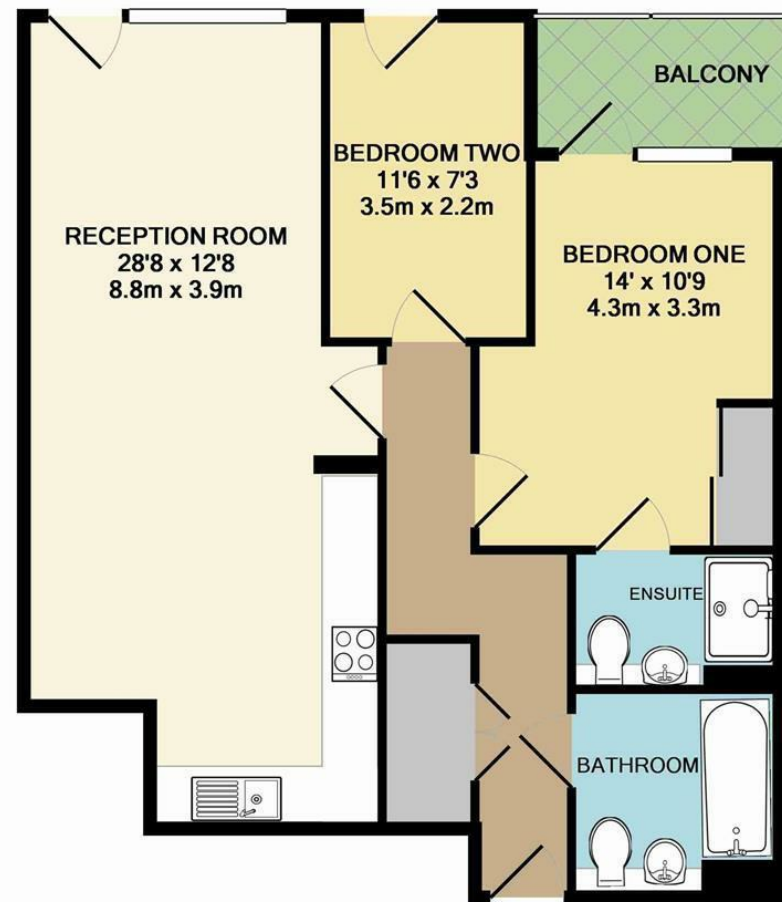


Waterside Way, N17



TOTAL APPROX. FLOOR AREA 723 SQ.FT. (67.2 SQ.M.)

Whilst every attempt has been made to ensure the accuracy of the floor plan contained here, measurements of doors, windows, rooms and any other items are approximate and no responsibility is taken for any error, omission, or mis-statement. This plan is for illustrative purposes only and should be used as such by any prospective purchaser. The services, systems and appliances shown have not been tested and no guarantee as to their operability or efficiency can be given
Made with Metropix ©2015

Whilst every attempt has been made to ensure the accuracy of the floor plan contained here, measurements of doors, windows, rooms and any other items are approximate and no responsibility is taken for any error, omission or mis-statement. This plan is for illustrative purposes only and should be used as such by any prospective purchaser. The services, systems and appliances shown have not been tested and no guarantee as to their operability or efficiency can be given.



£1,750

A two bedroom sixth floor apartment situated in the new Hale Village development Kingfisher Heights. The property comprise open plan kitchen/reception, well equipped kitchen (including dish washer) two good size bedrooms (one ensuite), modern bathrooms and a private balcony.

Tottenham Hale Tube/Rail/Bus Station (Zone 3 / Victoria Line / Stansted Express) are only few minutes walk away & Tottenham Hale Retail Park is within close proximity.



